



## MANUFACTURER OF

PTFE LINED PRODUCTS,  
PRESSURE VESSEL, LPG TANKS,  
P. OIL, BLACK OIL, BITUMEN TANKS,  
RUNNING GEAR & PROCESS  
EQUIPMENTS.

# PTFE PIPE LINE DIVISION

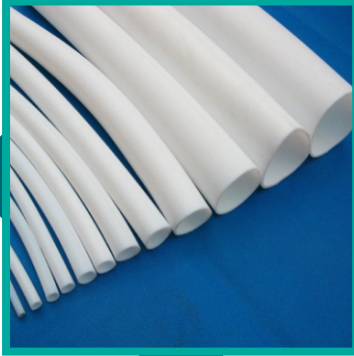
## OUR SHED AREA



## INFRASTRUCTURE

1. Shed Area 1200 Sq. Mtr.
2. Office & Store 152 Sq. Mtr.
3. E.O.T. crane 10 Mt Capacity 2 Nos.
4. Plate rolling machine 2500 mm span x 25 mm thick of Himalaya make.
5. Plate rolling machine 2500 mm span x 6 mm thick capacity.
6. Plate bending machine 4 mm thickness.
7. Bitumen & petrol / diesel dish end formation machine.
8. Radial drill with drill capacity up to 40 degree.
9. Lathe Machine.
10. In house drawings and design through qualified engineers and Stress relieving.
11. In house Hydro testing facility and 50 kl water storage capacity.
12. 35 mm degree hole capacity radial drill machine.
13. Surface preparation & blasting.
14. Painting & Facilities.
15. Pickling & passivation.
16. Aluminum insulation for glass wool, LRB & themocall.
17. Welding machine like ARC, MIG & ARGON (TIG)
18. Liner Draw Machine.
19. Pipe Flaring Machine.
20. Bend Flaring Machine.
21. Injection Moulding Machine.
22. Pest Extruder Machine.
23. Sintering Oven 5mtr.
24. Hydraulic Press 20ton.
25. Moulding oven.

# PTFE LINED PIPE AND FITTINGS



## PTFE LINER

1. Size: 25 NB to 150 NB
2. Length: 100 mm to 3 Meter
3. Thickness: Min 3.2 mm  
Max 7.5 mm (Vacuum Application)

## CS PTFE LINED PIPES

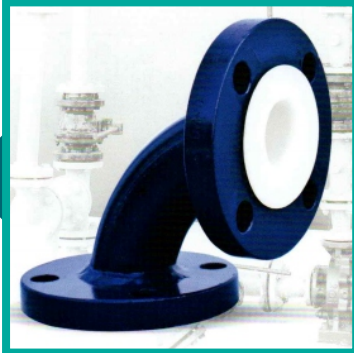
1. CS PTFE Lined Pipes from 25 NB TO 150 NB Size.
2. In-house Fabrication, Extrusion, Lining and Flaring department for manufacturing of CS PTFE Lined Pipes.
3. The Pipe Material used is 106 Grade B Sch 40 from 25 NB to 150 NB and above Sch 20 Pipes are used.
4. The Flanges normally used are of ASTM A 105/IS 2062.
5. Lining: PTFE as per ASTM D 4895
6. PTFE face thk as per ASTM F 1545
7. Testing as per ASTM F 1545 Which Includes Visual, Dimensional, Hydro Test at 29.8 Kg/cm<sup>2</sup> and Spark Test 15 KVA.

NB	ID+ -1	B	C	PCD	OD	T	No. of Holes	Hole Dia.	Pipe Thk k	Liner Thks +0-1
15	14	21	34.9	60.3	88.9	11.1	4	15.9	2.9	3.2
20	19.6	26.6	42.7	69.8	98.4	12.7	4	15.9	3.4	3.2
25	19.6	26.6	50.8	79.4	108.0	14.2	4	15.9	3.4	3.2
32	28.1	35.1	63.5	88.9	117.5	15.8	4	15.9	3.6	3.2
40	33.9	40.9	73.0	98.4	127.5	17.5	4	15.9	3.7	3.5
50	45.5	52.5	92.1	120.7	152.4	19.1	4	19.0	3.9	3.7
65	55.7	62.7	104.8	139.7	177.8	22.2	4	19.0	5.2	4.0
80	70.9	77.9	127.0	152.4	190.5	23.8	4	19.0	5.5	4.5
100	95.3	102.3	157.2	190.5	228.6	23.8	8	19.0	6.0	4.5
125	119.2	128.2	185.7	215.9	254.0	23.8	8	22.2	6.0	4.5
150	145.1	154.1	215.9	241.3	279.4	25.4	8	22.2	7.1	5.5



## [BENDS]

## LINED BEND 90 DEGREE



1. Size: 25 NB TO 150 NB
2. Bend Outer Body ASTM A 234 Gr WPB SCH-40/SS 304/SS 316
3. Flange ASTM A 105/IS 2062
4. Lining: PTFE as per ASTM D 4895
5. PTFE face thk as per ASTM F 1545
6. Resin used for Making PTFE Liners is procured from DuPont
7. ALL MS PTFE Lined Elbows are tested as per ASTM F 1545 Which Includes Visual, Dimensional, Hydro Test at 29.8 Kg/cm<sup>2</sup> and Spark Test 15 KVA.

NB	OD	PCD	No. of Holes	Hole Dia.	R/F	T	Lining thik	F
25	108.0	79.0	4	16.0	51.0	14.3	3.5	89.0
40	127.0	98.0	4	16.0	73.0	17.5	3.5	102.0
50	152.4	120.6	4	19.0	92.0	19.0	3.5	114.0
65	177.8	139.7	4	19.0	105.0	22.2	3.5	127.0
80	190.5	152.4	4	19.0	127.0	23.8	4	140.0
100	228.6	190.0	8	19.0	157.0	23.8	4	165.0
150	279.4	241.3	8	22.2	216.0	25.4	4.5	203.0

## LINED BEND 45 DEGREE

1. Size: 25 NB TO 150 NB
2. Bend Outer Body ASTM A 234 Gr WPB SCH-40/SS 304/SS 316
3. Flange ASTM A 105/IS 2062
4. Lining: PTFE as per ASTM D 4895
5. PTFE face thk as per ASTM F 1545
6. Resin used for Making PTFE Liners is procured from DuPont
7. ALL MS PTFE Lined Elbows are tested as Per ASTM F 1545 Which Includes Visual, Dimensional, Hydro Test at 29.8 Kg/cm<sup>2</sup> and Spark Test 15 KVA.

NB	OD	PCD	No. of Holes	Hole Dia.	R/F	T	Lining thik	F1
25	108.0	79.0	4	16.0	51.0	14.3	3.5	44.0
40	127.0	98.0	4	16.0	73.0	17.5	3.5	57.0
50	152.4	120.6	4	19.0	92.0	19.0	3.5	63.0
65	177.8	139.7	4	19.0	105.0	22.2	3.5	76.0
80	190.5	152.4	4	19.0	127.0	23.8	4	76.0
100	228.6	190.0	8	19.0	157.0	23.8	4	102.0
150	279.4	241.3	8	22.2	216.0	25.4	4.5	127.0





# PTFE LINED PIPE AND FITTINGS

## [TEES]

### LINED EQUAL TEE



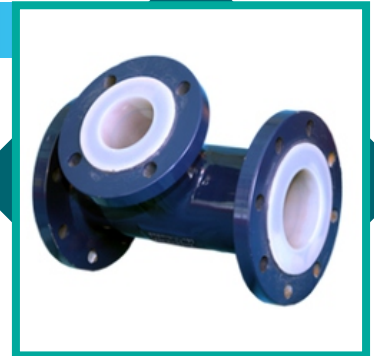
1. Size: 25 NB TO 150 NB
2. Tee Body ASTM A 395  
Gr 60-40-18 OR fabrication form Pipe
3. Temperature: FEP-Max 180
4. PFA Max: 200 Degree Celsius
5. PP Max: 100 Degree Celsius
6. Flange Connection: ANSI B 16.5
7. Face to Face: ANSI B 16.10
8. Tested as Per ASTM F 1545 Which Includes Visual, Dimensional, Hydro Test at 29.8 Kg/cm<sup>2</sup> and Spark Test 15 KVA.

NB	OD	PCD	No.of Holes	Hole Dia.	R/F	T	Lining thik	L
25	108.0	79.0	4	16.0	51.0	14.3	3.5	178.0
40	127.0	98.0	4	16.0	73.0	17.5	3.5	204.0
50	152.4	120.6	4	19.0	92.0	19.0	3.5	228.0
65	177.8	139.7	4	19.0	105.0	22.2	3.5	254.0
80	190.5	152.4	4	19.0	127.0	23.8	4.0	280.0
100	228.6	190.0	8	19.0	157.0	23.8	4.0	330.0
150	279.4	241.3	8	22.2	216.0	25.4	4.5	406.0

### LINED UNEQUAL TEE

1. Size: 25 NB TO 150 NB
2. Tee Body ASTM A 395  
Gr 60-40-18 OR fabrication form Pipe
3. Temperature: FEP-Max 180
4. PFA Max: 200 Degree Celsius
5. PP Max: 100 Degree Celsius
6. Flange Connection: ANSI B 16.5
7. Face to Face: ANSI B 16.10
8. Tested as Per ASTM F 1545 Which Includes Visual, Dimensional, Hydro Test at 29.8 Kg/cm<sup>2</sup> and Spark Test 15 KVA.

NB	OD	PCD	No.of Holes	Hole Dia.	R/F	T1	L
40 x 25	127.0	98.0	4	16.0	73.0	17.5	204
50 x 25	152.4	120.6	4	19.0	92.0	19.0	228
50 x 40	152.4	120.6	4	19.0	92.0	19.0	228
80 x 25	190.5	152.4	4	19.0	127.0	23.8	280
80 x 40	190.5	152.4	4	19.0	127.0	23.8	280
80 x 50	190.5	152.4	4	19.0	127.0	23.8	280
100 x 25	228.6	190.5	8	19.0	157.0	23.8	330
100 x 40	228.6	190.5	8	19.0	157.0	23.8	330
100 x 50	228.6	190.5	8	19.0	157.0	23.8	330
100 x 80	228.6	190.5	8	19.0	157.0	23.8	330
150 x 25	279.4	241.3	8	22.2	216.0	25.4	406



### LINED REDUCING FLANGE



1. Size: 25 NB TO 150 NB
2. Outer Body ASTM A 395 Gr 60-40-18
3. Temperature: FEP-Max 180
4. PFA Max: 200 Degree Celsius
5. PP Max: 100 Degree Celsius
6. Flange Connection: ANSI B 16.5
7. Spark Testing of PFA/FEP/PP at 15 KVA

NB	OD	PCD	No.of Holes	Hole Dia.	R/F
40 x 25	127.0	98.0	4	16.0	73.0
50 x 25	152.4	120.6	4	19.0	92.0
50 x 40	152.4	120.6	4	19.0	92.0
80 x 25	190.5	152.4	4	19.0	127.0
80 x 40	190.5	152.4	4	19.0	127.0
80 x 50	190.5	152.4	4	19.0	127.0
100 x 25	228.6	190.5	8	19.0	157.0
100 x 40	228.6	190.5	8	19.0	157.0
100 x 50	228.6	190.5	8	19.0	157.0
100 x 80	228.6	190.5	8	19.0	157.0
150 x 25	279.4	241.3	8	22.2	216.0

### LINED CON REDUCER

1. Size: 25 NB TO 150 NB
2. Reducer Body ASTM A 395 Gr 60-40-18 OR ASTM A234 Gr WPB
3. Temperature: FEP-Max 180
4. PFA Max: 200 Degree Celsius
5. PP Max: 100 Degree Celsius
6. Flange Connection: ANSI B 16.5
7. Tested as Per ASTM F 1545 Which Includes Visual, Dimensional, Hydro Test at 29.8 Kg/cm<sup>2</sup> and Spark Test 15 KVA.

NB	OD	PCD	No.of Holes	Hole Dia.	R/F	L	OD-1	PCD-1	No.of Holes	Hole Dia.	R/F-1
40X25	127.0	98.0	4	16.0	73.0	114.0	108.0	79.4	4	16.0	51.0
50X25	152.4	120.6	4	19.0	92.0	127.0	108.0	79.4	4	16.0	51.0
50X40	152.4	120.6	4	19.0	92.0	127.0	127.0	98.0	4	16.0	73.0
80X25	190.5	152.4	4	19.0	127.0	152.0	108	79.4	4	16.0	51.0
80X40	190.5	152.4	4	19.0	127.0	152.0	127.0	98.0	4	16.0	73.0
80X50	190.5	152.4	4	19.0	127.0	152.0	152.0	120.6	4	19.0	92.0
100X25	228.6	190.5	8	19.0	157.0	178.0	108.0	79.4	4	16.0	51.0
100X40	228.6	190.5	8	19.0	157.0	178.0	127.0	98.0	4	16.0	73.0
100X50	228.6	190.5	8	19.0	157.0	178.0	152.4	120.6	4	19.0	92.0
100X80	228.6	190.5	8	19.0	157.0	178.0	190.5	152.4	4	19.0	127.0
150X25	279.4	241.3	8	22.2	216.0	229.0	108.0	79.4	4	16.0	51.0





## [LINED VALVES]

### LINED BALL VALVE



1. Design Standard : BS EN ISO 17292:2004 (Formerly BS 5351)
2. Drilling : ASA #150 / DIN 2632/2633 / BS 10 Table D, E or F / Customer Specified.
3. Face to Face : ANSI B 16.10 / DIN 3202 / BS EN 558-1/2
4. Lining Thickness : 3 to 5 mm
5. Testing Standard : BS EN 12266-1&2 (2003)

SIZE(NB)	L+3	OD+1	T+3-00	PCD+1.6	No. of Holes	Hole Dia.	R/F Dia.
15MM	108	89	12	60	04	16	35
20MM	127	98	13	70	04	16	43
25MM	127	108	13	79	04	16	51
32MM	165	115	16	89	04	16	64
40MM	165	127	16	98	04	16	73
50MM	178	152	18	121	04	19	92.1
65MM	190	180	23	140	04	19	105
80MM	203	191	23	152	04	19	127
100MM	229	229	24	191	08	19	157
150MM	267	280	24	241	08	22	216

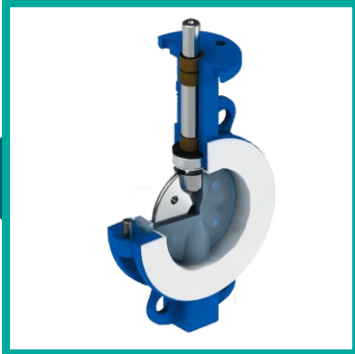
### LINED DOUBLE WINDOW SIDE GLASS

1. Size: 25 NB TO 150 NB
2. SG Body ASTM A 395 Gr 60-40-18
3. Temperature: FEP-Max 180
4. PFA Max: 200 Degree Celsius
5. PP Max:100 Degree Celsius
6. Flange Connection: ANSI B 16.5
7. Face to Face: ANSI B 16.10
8. Tested as Per ASTM F 1545 Which Includes Visual, Dimensional, Hydro Test at 29.8 Kg/cm<sup>2</sup> and Spark Test 15 KVA.

Size (NB)	L±3	OD	T	L1	d	A
25 MM	178	108	17	130	85	30
40 MM	204	127	17	150	110	45
50 MM	228	152	19	170	135	60
65 MM	254	178	20	200	155	75
80 MM	280	191	23	220	175	90
100 MM	330	228	23	260	205	110
125 MM	380	254	25	290	225	135
150 MM	406	280	25	340	250	175



### LINED BUTTERFLY VALVE



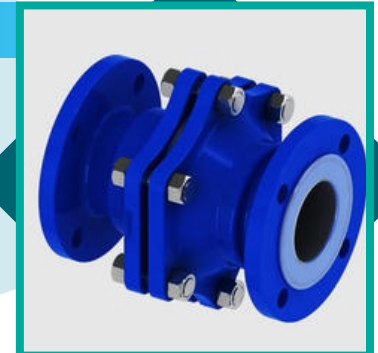
1. Lined Butterfly Valves from 50 NB to 250 NB.
2. The Valves are mounted with Actuator as per Client Request.
3. MOC of the body is 216 Grade WCB / SS 304 / SS 316
4. We are offering Wafer Type Butterfly Valves.
5. This Valves are Tested visually / dimensionally / Hydro Test (Body Test, Sheet Test) / Spark Test at 15 KVA

SIZE (MM)	L+3	L+1	ID+2	R/F+2
50 MM	50	43	50	93
65 MM	53	46	65	106
80 MM	53	46	75	128
100 MM	61	52	100	158
150 NB	64	56	150	216
200 NB	70	60	200	270
250 NB	80	68	250	323

### LINED BALL CHECK VALVE

1. Lined Ball Check Valves from 25 NB to 150 NB.
2. Lined Ball Check Valves can be lined with PFA/FEP / Antistatic PFA.
3. MOC of the Body and END Piece is CS/SS + MIN THK 3MM. PFA / FEP.
4. This Valves are Tested Visually / Dimensionally / Hydro Test (Body Test, Sheet Test) / Spark Test at 15 KVA.

SIZE (MM)	L+3	OD+1	T+1	PCD+1.6	HOLE OD	No. of Holes	R/F
25 NB	127	108	15	79	16	4	51
40 NB	165	127	19	98	16	4	73
50 NB	178	152	20.5	121	19	4	92
80 NB	203	191	25	152	19	4	127
100 NB	229	229	25	191	19	8	157
150 NB	267	280	25	241	22	8	216



## [LINED VALVES]



### DIP PIPE

#### Item Des.

1. Lining: PTFE
2. Pipe: ASTM A 106, Gr. B, SS 304, SS 316, SS 316L
3. Flange: IS 2062, SA 105, SS 304, SS 316, SS 316L
4. Pipe Sch.: Sch. 40, Sch. 80.
5. Flange Rating: 150 CL, BS - 10 - Table D, Table E, Table F, Table H, Table J & Table K Din Standard - PN 6, PN 10, PN 16, PN 25 & PN 40

#### Testing Specification

1. 100% Visual Check / Dimensional Check
2. 100% Hydro Test at 5kg / cm (g) for holding time of 3 Mins. as per ASTM F 1545 - 15A
3. 100% Spark Test at 15 kv after lining
4. 100% Lining Thk. to be checked.

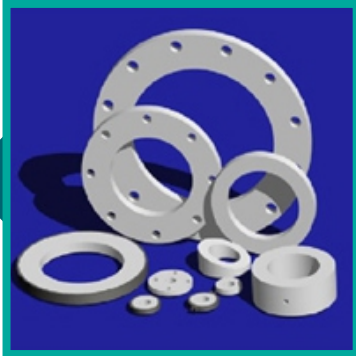
## SS PTFE CORRUGATED HOSE PIPES

#### Item Des.

1. Lining: PTFE
2. Hose Pipe: SS 304, SS 316, SS 316L
3. Braiding: SS 304, SS 316, SS 316L
3. Flange: SS 304, SS 316, SS 316L
4. Flange Rating: 150 CL, BS - 10 - Table D, Table E, Table F, Table H, Table J & Table K Din Standard - PN 6, PN 10, PN 16, PN 25 & PN 40.

#### Testing Specification

1. 100% Visual Check / Dimensional Check
2. 100% Hydro Test at 6kg / cm (g) for holding time of 3 Mins. as per ASTM F 1545 - 15A
3. 100% Spark Test at 15 kv after lining
4. 100% Lining Thk. to be checked.



### PTFE SPACER

1. Size: 25 NB TO 300 NB
2. Spacers Body PTFE as per ASTM D 4894.

NB	OD	ID	MIN LENGTH	MAX LENGTH
1"	51	25	3	100
1.1/2"	73	40	3	100
2"	92	50	3	100
2.1/2"	105	65	3	100
3"	127	80	3	100
4"	157	100	3	100
6"	216	150	3	100
8"	270	200	3	100
10"	324	250	3	100
12"	381	300	3	100

## PTFE BLIND FLANGE

1. Size: 25 NB TO 150 NB Outer Body IS 2062
2. Temperature: FEP-Max 180 Degree Celsius
3. PFA Max: 200 Degree Celsius
5. PP Max: 100 Degree Celsius
6. Flange Connection: ANSI B 16.5
7. Spark Testing of PFA/FEP/PP at 15 KVA

SIZE (NB)	OD	R/F	T	PCD	No. of Holes	HOLE DIA. I
15 NB	88.9	34.9	11.1	60.3	4	15.9
20 NB	98.4	42.7	12.7	69.3	4	15.9
25 NB	108.0	50.8	14.2	79.4	4	15.9
32 NB	117.5	63.5	15.8	88.9	4	15.9
40 NB	127	73.0	17.5	98.4	4	15.9
50 NB	152.4	92.1	19.1	120.7	4	19.0
65 NB	177.8	104.8	22.2	139.7	4	19.0
80 NB	190.5	127.0	23.8	152.4	4	19.0
100 NB	228.6	157.2	23.8	190.5	8	19.0
125 NB	254.0	185.7	23.8	215.9	8	22.2
150 NB	279.4	215.9	15.4	241.3	8	22.2



# TANKS AND PROCESS EQUIPMENT DIVISION



BITUMEN / P.OIL TANKS





# COMPANY PROFILE

M/S Agarwal Tanks and Allied Works is in field of Fabrication or Pressure Vessels (especially Bulk LPG Tanker) at Plot No. 17. GIDC, Ranoli, Vadodara. We fabricate all kinds of static and mobile pressure vessels like BULK LPG, PROPANE, PROPYLENE, AMMONIA, ETHYLENE OXIDE, CARBON DIOXIDE, etc. We also manufacture all kinds of tanks for Bitumen, P-oil, Black Oil & Running Gear (Trailer) certified under RTO Commissioner, Gandhinagar.

We deal in PTFE products, Piping, Fittings, Ball Valves and also in Chemical & Pharma industries Equipments, HEAT EXCHANGER, PROCESSING REACTOR, OIL STORAGE TANKS, RECEIVER, COLUMN & PROCESS EQUIPMENTS. Our technical expertise helps our customers for a competitive advantage. Our proactive approach to technical issues enables customers to understand and implement cost-effective solutions in Design Fabrication and Production Engineering. We welcome your interest and participation to be part of our company through which both our organization would grow.

We are first company in India to manufacture pressure vessels (LPG Tank) under Lloyd's Register Asia Inspection Agency. We are conversant with following codes – ASME Section, IS-2825, SMPV 20016, API650.

**ATAW is an extension of AGARWAL ROADLINES which is in transportation field of LPG and Bitumen since last 3 years.**



## CONTACT US

Plot No 17, GIDC , Ranoli, Vadodara - 391 350

 98980 36666 | 70415 05292

**WEBSITE:** [www.agarwaltanks.com](http://www.agarwaltanks.com)

**EMAIL:** [sales@agarwaltanks.com](mailto:sales@agarwaltanks.com)

**ISO 9001:2015**

Quality Management Systems

## MISSION

Our mission is to produce high quality and reliable product for our clients. We are proud to be the Licensed under Petroleum and Safety Organization (PESO) for manufacturing of Pressure Vessels under SMPV Rules 2016 and P-Oil tanks under Petroleum rules 2002.



### DHANRAJ GROUP OF COMPANIES (M.I. AGARWAL FAMILY)

- Agarwal Roadlines
- Agarwal Tanks & Allied Works
- Hi-Tech Sweet Water Tech. Pvt. Ltd.
- Keshav Pharma Pvt. Ltd.
- Agarwal D Gassing Station
- Hariom Developers
- Sanjeevni Trading Pvt. Ltd.
- Shyam Sangini Corporation